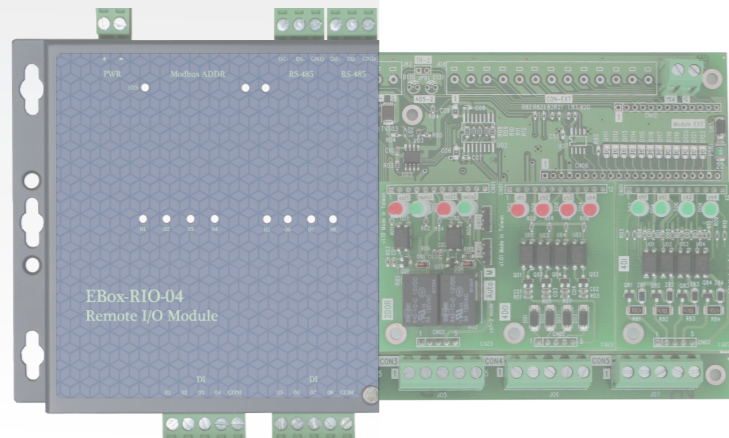


I/O Control Modules

Dimensions		228 x109 x 33mm 24V AC/DC				
	RS-485	Ethernet	AI / AO	DI / DO	DOR	Description
EBox-RIO-04	2	--	--	20/0	--	Modbus Remote I/O with 2 RS-485, 20DI
EBox-RIO-07	2	--	20/0	--	--	Modbus Remote I/O with 2 RS-485, 20AI
EBox-RIO-09	2	--	--	12/8	--	Modbus Remote I/O with 2 RS-485, 12DI+8DO
EBox-RIO-11	2	--	12/8	--	--	Modbus Remote I/O with 2 RS-485, 12AI+8AO
EBox-RIO-14	2	--	6/2	4/4	2	Modbus Remote I/O with 2 RS-485, 4DI+4DO+6AI+2AO+2Relay
EBox-RIO-E02	2	1	--	32/0	--	Ethernet Modbus Remote I/O with 2 RS-485, 32DI
EBox-RIO-E04	2	1	--	20/0	--	Ethernet Modbus Remote I/O with 2 RS-485, 20DI
EBox-RIO-E09	2	1	--	12/8	--	Ethernet Modbus Remote I/O with 2 RS-485, 12DI+8DO
EBox-RIO-E14	2	1	6/2	4/4	2	Ethernet Modbus Remote I/O with 2 RS-485, 4DI+4DO+6AI+2AO+2Relay

Product Features

- TCP/IP Ethernet plus dual RS-485 Interface
- Diverse I/O Configurations
- Standard Modbus Communication Interface
- Diverse Power Configuration
- RS-485 possess Modbus-RTU Master/Slave Function



Benefit

- ★ Provide System developer the most simple and diverse I / O control product
- ★ Different base I/O module combination, reduce inventory cost for system developers
- ★ Simultaneously at least two (proximal and distal) Host monitoring
- ★ Suddenly there is a small number of monitoring points increase, it can amplify the fewest I/O points at the lowest cost through basic I/O modules
- ★ Save AC/DC power converter configuration in monitoring field site
- ★ Low threshold for customization

Application

- Central Air Monitoring:** Air conditioning exhaust fan/ blower Monitoring Climate Control Box control...
- Distal Centralized Monitoring:** Intelligent Buildings weak current Monitoring, Judge available parking spaces...
- Simple Switch Control:** Hotel housekeeping service Notification (RCS) Locker Switch Management...
- Direct Digital Control (DDC):** Emergency Alert System, Fire Monitoring System Preservation Monitoring System...

Specified I/O Expansion Module

ModIO-AIAO	ModIO-AI	ModIO-AO	ModIO-DI	ModIO-DO	ModIO-DOR
AI Quantity : 2 AO Quantity : 2	Quantity : 4 points	Quantity : 4 points	Quantity : 4 points	Quantity : 4 points	Quantity : 2 points
ModIO-12DI			ModIO-12DO		
Quantity : 12 points			Quantity : 12 points		

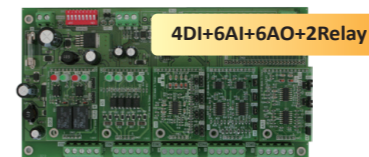
LLD-ModbusIO / DDC

Model No.	LLD-ModbusIO-01	LLD-DDC8-01	LLD-DDC32E-01	LLD-ModbusIO32E-01
Mechanism	Control board dimensions : 200 x 107 x 23 mm / Installed IO module : 200 x 107 x 27 mm			
Power Supply	24V AC/DC			
Hardware				
Network interface				✓
RS-485	1 or 2		2	
I/O Control point	32 or 20		32	
Software				
DDC (Direct Digital Control)				✓

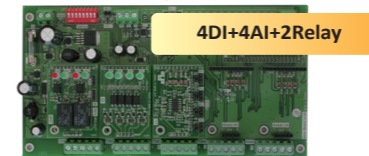
Product Features

Provide a self, elastically attached I/O module design with optional DI/DO/Relay/AI/AO etc. I/O modules control up to 32 points for each motherboard

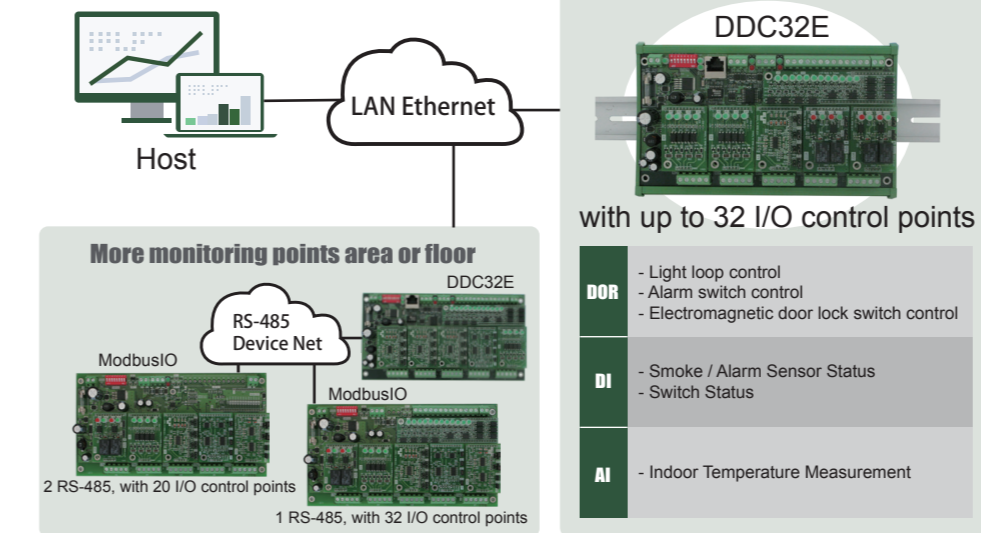
Ethernet type LLD-DDC32-01E can expand up to 64 RS-485 type LLD-ModbusIO-01



Elastically I/O module design



Example



2016 Product Overview

Website: <http://www.embedded-box.com.tw/>
 E-mail: sales@embedded-box.com.tw
 Telephone: +886-2-2925-3433
 Fax: +886-2-2925-3429
 Address: 4F, No. 220, Sec. 1, Zhongshan Rd.,
 Yonghe Dist., New Taipei City 234,
 Taiwan R.O.C.

EBox-CGate

Cloud Gateway

EBox-CGate-Modbus-01



Working Voltage DC 9~24 VDC
Dimensions 151 x 95 x 31mm

Cloud Services

Distributed Management	✓
Management Interface	✓
Protection	✓
Communication Encryption	✓

Hardware

Network Interface	✓
RS-485 Modbus-RTU Interface	✓
Analog Input	✓
Digital Input/Output	✓
SD Expansion Interface	✓
Reserved Interface : RS232, USB	✓

EBox-CGate-SCADA-01



Working Voltage DC 9~40 VDC
Dimensions 124 x 105 x 32mm

Cloud Services

Distributed Management	✓
Management Interface	✓
Protection	✓
Communication Encryption	✓

Hardware

Network Interface	✓
RS-485 Modbus-RTU Interface	✓
Analog Input	✓
Digital Input/Output	✓
SD Expansion Interface	✓
Reserved Interface : GPIO, USB, UART	✓

Benefit

- ★ High cost-effective front-end controller
- ★ Provide Cloud services, meet IoT(Internet of Things) trend
- ★ Direct SQL data exchange with remote or cloud host, save cost for another SCADA monitoring host
- ★ Diverse setting mode, can save complicated setting time for connected devices
- ★ Built-in G-Byte level data storage space, can be used for system data back up
- ★ With Digital I/O, can process direct field side light/sound alarm without external equipment

Application

- Green Energy Industry:** Solar Power Monitoring system, Wind Power Monitoring system
- Intelligent Control:** Public hydropower automatic meter reading system, Electricity sharing for rental house, Server room rental power management, Saving classroom system
- General Purpose Monitoring:** IT room Monitoring, Intelligent Building, Public facilities and weak current monitoring, Large factory environment monitoring

Intelligent Power Management Server

EBox-CGate-PMS-01	
Applications	
Management Interface	Web Console, SQL DB direct setup
Intelligent Power Management	Current overload treatment Current overload alarm range Current overload alarm message delivery
Hardware	
▶ Number of input Power : 1	▶ Working voltage : 90V~260 VAC
▶ Number of output Power : 8	▶ Voltage range : +/- 2% @ 90V~260V
▶ Active Power : +/- 2% @ 50W~5000W	
Working Voltage	90V~260 VAC
Dimensions	215 x 432 x 44.45mm

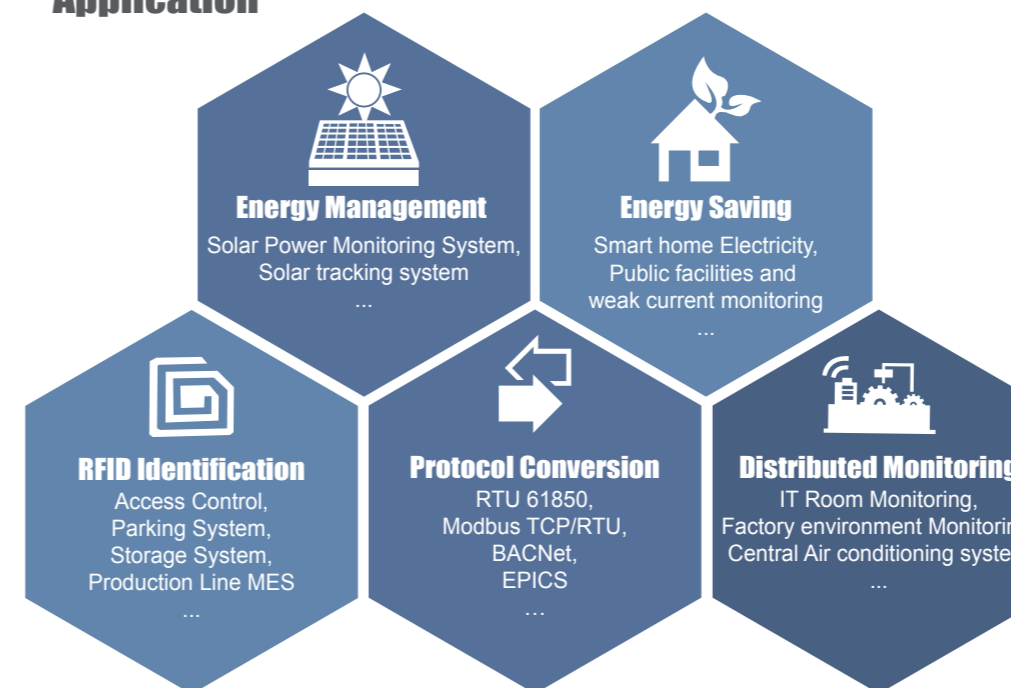
EBox-AIO

Multi-I/O control Computer

Benefit

- ★ Most cost-effective front controller with full network functionality
- ★ ARM RISC + Embedded Linux, immediately complete front-end data processing and protocol conversion
- ★ Communication and control interface complete IoT applications for a variety of equipment, instruments and sensors connected
- ★ Built-in Web Server to be the simplest remote monitoring interface
- ★ To execute MySQL Client and Server at the same time, to be front-end data buffer with a plug-in SD
- ★ With SSH / SSL / ASE encryption for transmission, improve data security for network communications
- ★ Support SNMP 、SMTP 、FTP 、Telnet 、NTP etc. advanced network protocol
- ★ Full interface surge, isolation protection 、 improve the reliability of the machine itself and overall system

Application



EBox-AIO-001 EBox-AIO-002 EBox-AIO-004 EBox-AIO-005



Working Voltage	DC 24VDC	DC 9~24VDC	DC 9-40VDC	DC 9~24VDC
Dimensions	350 x 203 x 44mm	145 x 93 x 35mm	124 x 105 x 32mm	145 x 93 x 35mm

Software

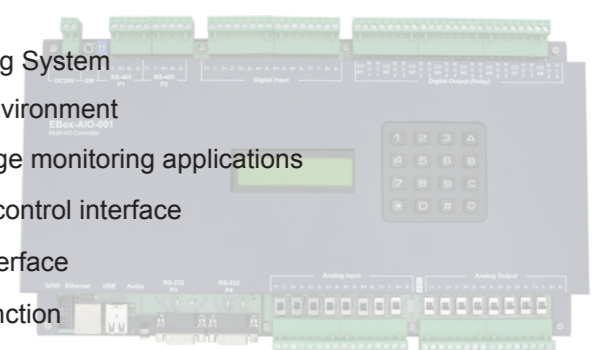
Linux				
Protocol stack	IPv4, IPv6, ICMP, ARP, DHCP, NTP, TCP, UDP, FTP, Telnet, HTTP, PPPoE, CHAP, PAP, SMTP, SSL, SSH			
Daemons	ssh, syslog/klogd, telnet server, ftp server, MySQL, PHP, Web server(lighttpd), amgrd(IP broadcast search)			

Hardware

Network Interface	1	2	1	2
USB Interface	2	1	1	1
Serial port	RS-232 x 2 RS-485 x 2	RS-232 x 1 RS-485 x 2	RS-232 x 1 RS-485 x 2 UART x 2	RS-485 x 4
Input / Output	Analog Input x 8 Analog Output x 8 Digital Input x 8 Relay Output x 8 GPIO x 8	Analog Input x 1 Digital Input x 3 Digital Output x 2 Relay Output x 1	GPIO x 16	Analog Input x 1 Digital Input x 3 Digital Output x 2 Relay Output x 1

Product Features

- Built-in embedded Linux Operating System
- Standard system development environment
- Suitable for database and webpage monitoring applications
- Common analog acquisition and control interface
- Complete digital signal control interface
- Multifunctional communication function



Product Features

- Easy Setting, Plug & Play
- Web HMI, Full-featured, easy to operate
- Database Architecture, easy for Cloud application
- Complete communication and control functions
- Active Alarm

